



Colorado Boulevard Corridor Study

PUBLIC MEETING #1 – FEBRUARY 2, 2023

Housekeeping Items

- Please sign-in
- Comment card and handout
- Study website
www.ColoradoBlvdCorridorStudy.com
- Meeting format
 - Introductory presentation
 - Open house
- Methods to provide feedback
 - Comment cards
 - Study website
 - Study contact (email, phone, mail)

The screenshot displays the website for the Colorado Boulevard Corridor Study. At the top, there are logos for SD DOT and SPEARFISH, along with navigation links for Study Area, Timeline, Public Involvement, Resources, and a yellow Contact Us button. The main banner features a photograph of a road with the text "COLORADO BOULEVARD" and "Corridor Study" overlaid. Below the banner, a paragraph states: "The City of Spearfish and South Dakota Department of Transportation (SDDOT) are conducting a study of Colorado Boulevard to determine current and future transportation needs as the area continues to experience significant growth and development." A dark blue contact form overlay is open, titled "CONTACT US" with a close button (X). The form includes fields for "First Name", "Last Name", "Email*", and a "Comment/Question" text area. The background of the website is a blurred image of a road.

Purpose of Today's Meeting

- Introduce the study
- Provide background information on why we are conducting the study
- Gather comments to help identify:
 - Transportation issues and needs along the Colorado Boulevard Corridor to be addressed by this study
 - Goals and priorities to help develop a long-range vision for the corridor

Study Advisory Team

- City of Spearfish
- Lawrence County
- South Dakota Department of Transportation



Study Corridor



— Study Corridor

● Study Intersections

Intersection	Study Intersection
1	Colorado Blvd & 27th St
2	Colorado Blvd & Heritage Dr
3	Colorado Blvd & Maitland Rd
4	Colorado Blvd & S Rainbow Rd
5	Colorado Blvd & US85

Study Goals



Determine

the number of lanes for
corridor



Create

alternatives for all study
intersections



Establish

a corridor access
management plan



Develop

**a long-range plan for
the corridor**

Study Schedule



Baseline Conditions and Future Needs Analysis

Traffic
Operations

Traffic Needs
Timeline

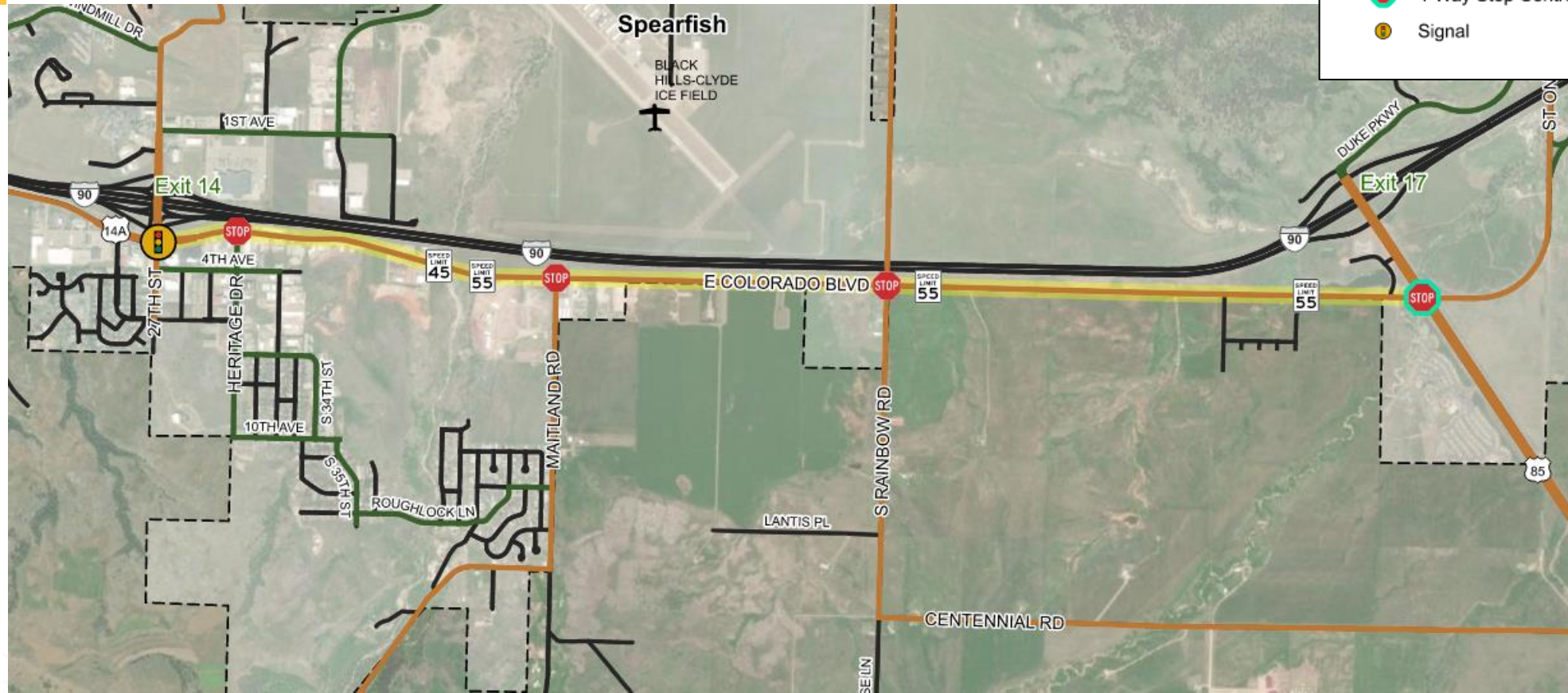
Local
Roadway
Network

Multi-modal
Facilities

Access
Density

Crash History

Local Roadway Network



Study Corridor	Spearfish Major Street Plan
Municipal Boundary	Arterial
Major Intersections	Collector
2-Way Stop Control	Local
4-Way Stop Control	
Signal	

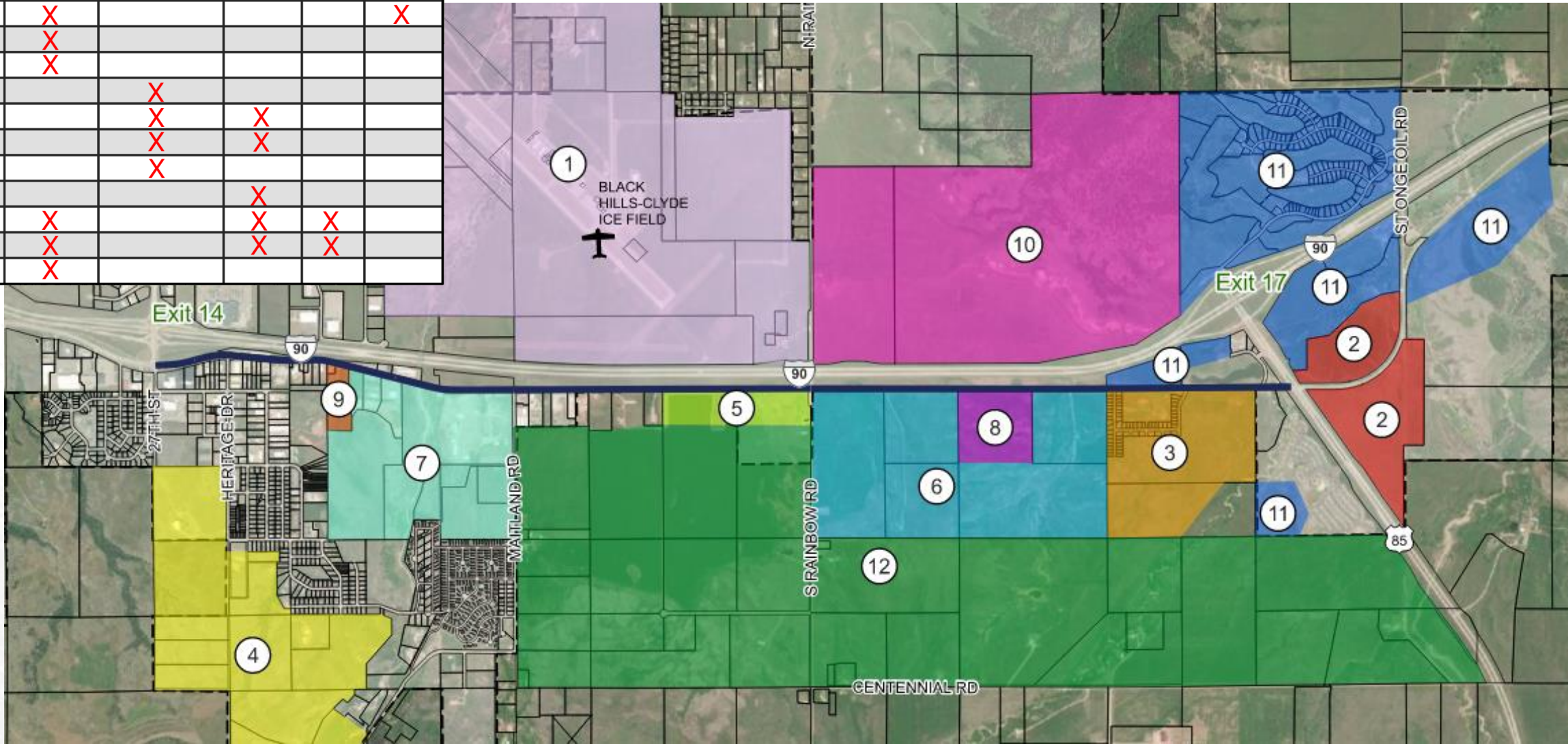
Source: Spearfish Area MTP



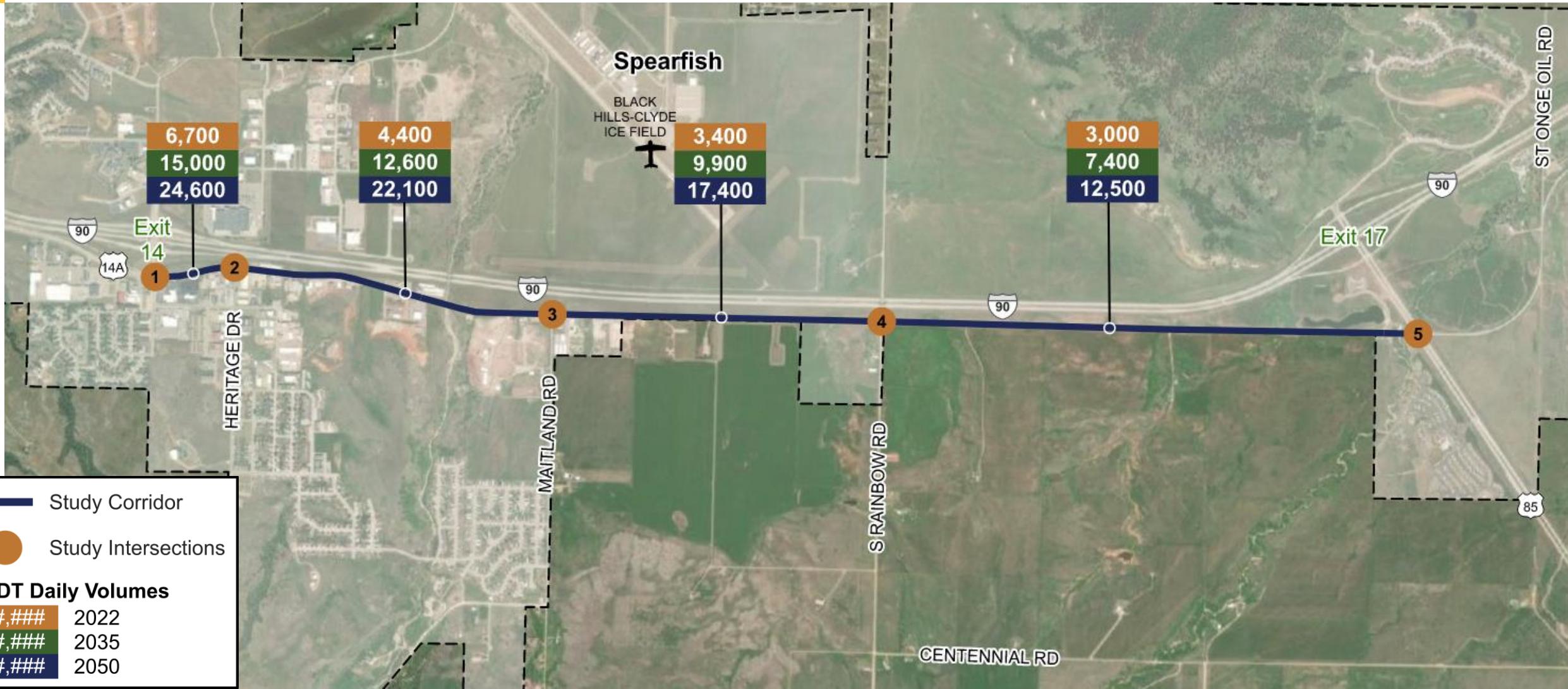
- Are there any roadway connections you wish existed surrounding the corridor?
- What is your long-term vision for the corridor?

Growth Areas

Growth Area	Residential Units	Commercial / Light Industrial (sf)	Retail / Office (sf)	Hotel Rooms	Clinic
1					
2	X				X
3	X				
4	X				
5		X			
6		X	X		
7		X	X		
8		X			
9			X		
10	X		X	X	
11	X		X	X	
12	X				



Traffic Volumes



Traffic Capacity Needs Timeline

2022

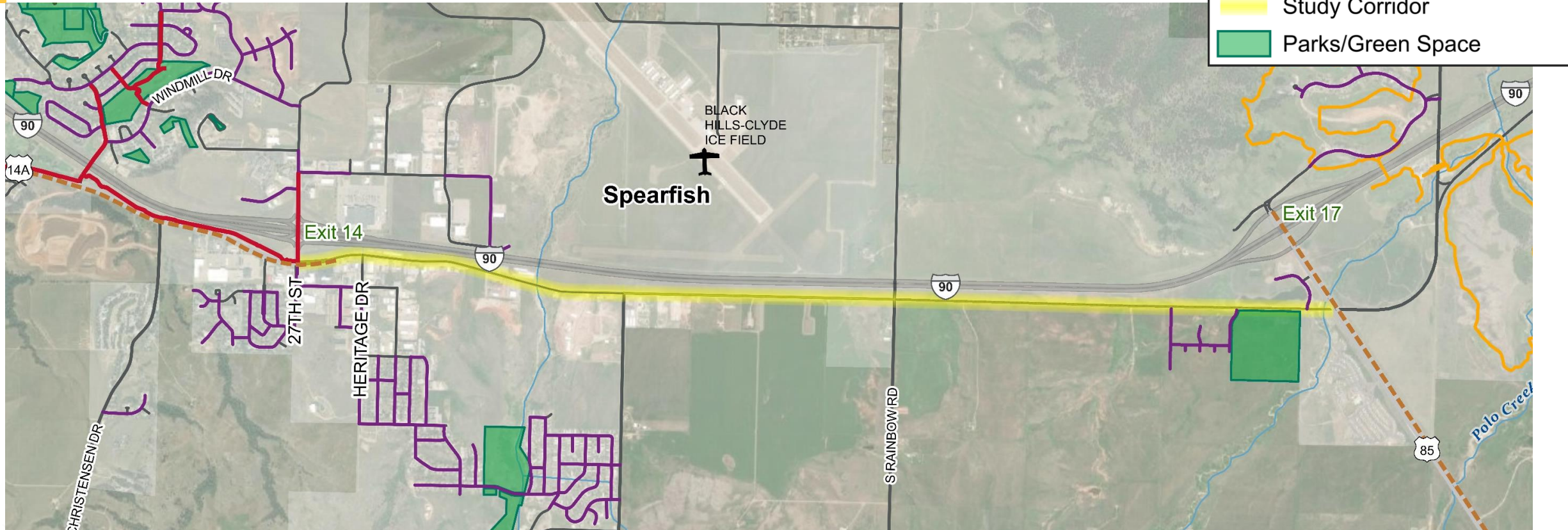
2035

2050

- Intersections
 - 27th Street
 - Heritage Drive
 - Rainbow Road
- Segment
 - 27th Street to Maitland Road

- Intersections
 - Maitland Road
 - US 85
- Segment
 - Maitland Road to US85

Multi-modal Facilities

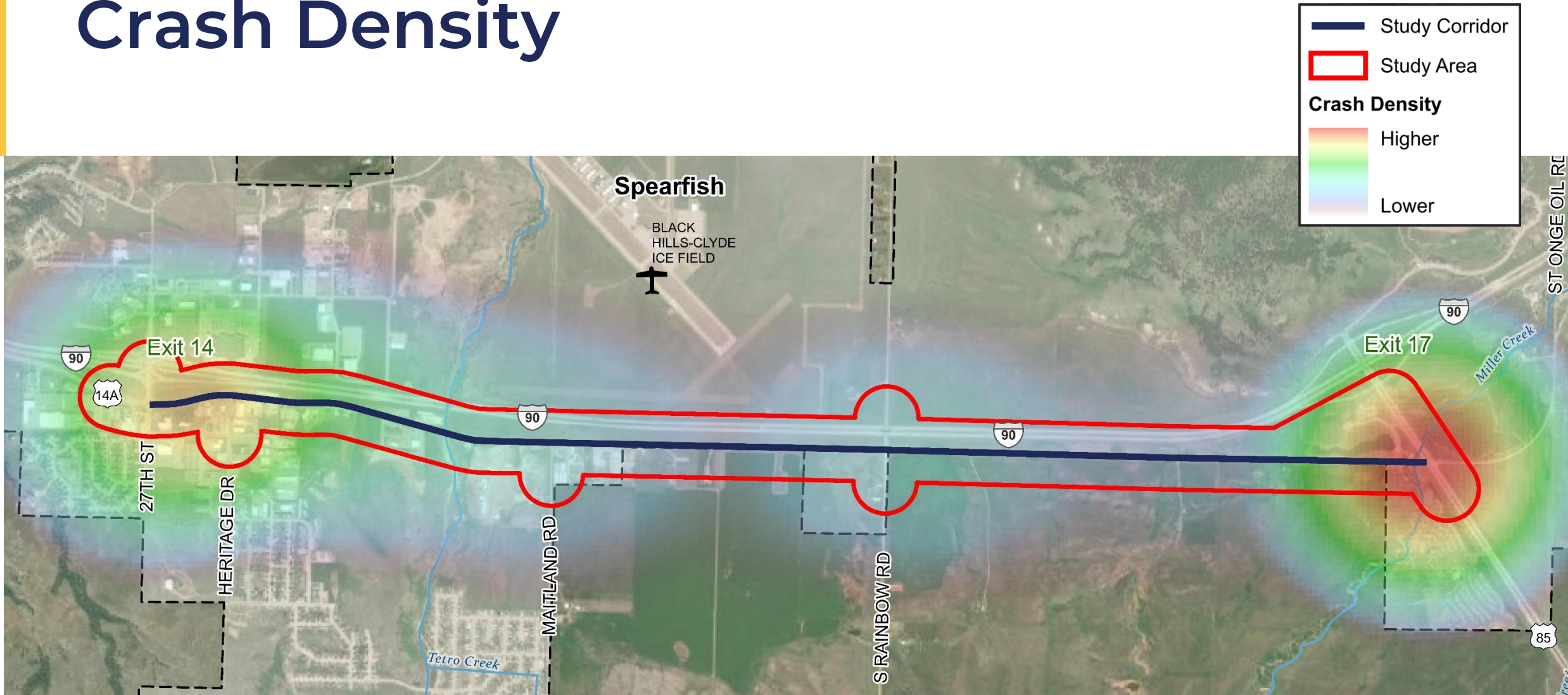


- Do you currently walk or bicycle along the study corridor or would if facilities existed?
- What destinations would you walk or bike to/from?
- If a recreation path were constructed, would you prefer it to be located on the north or south side of the study corridor?

Access Density

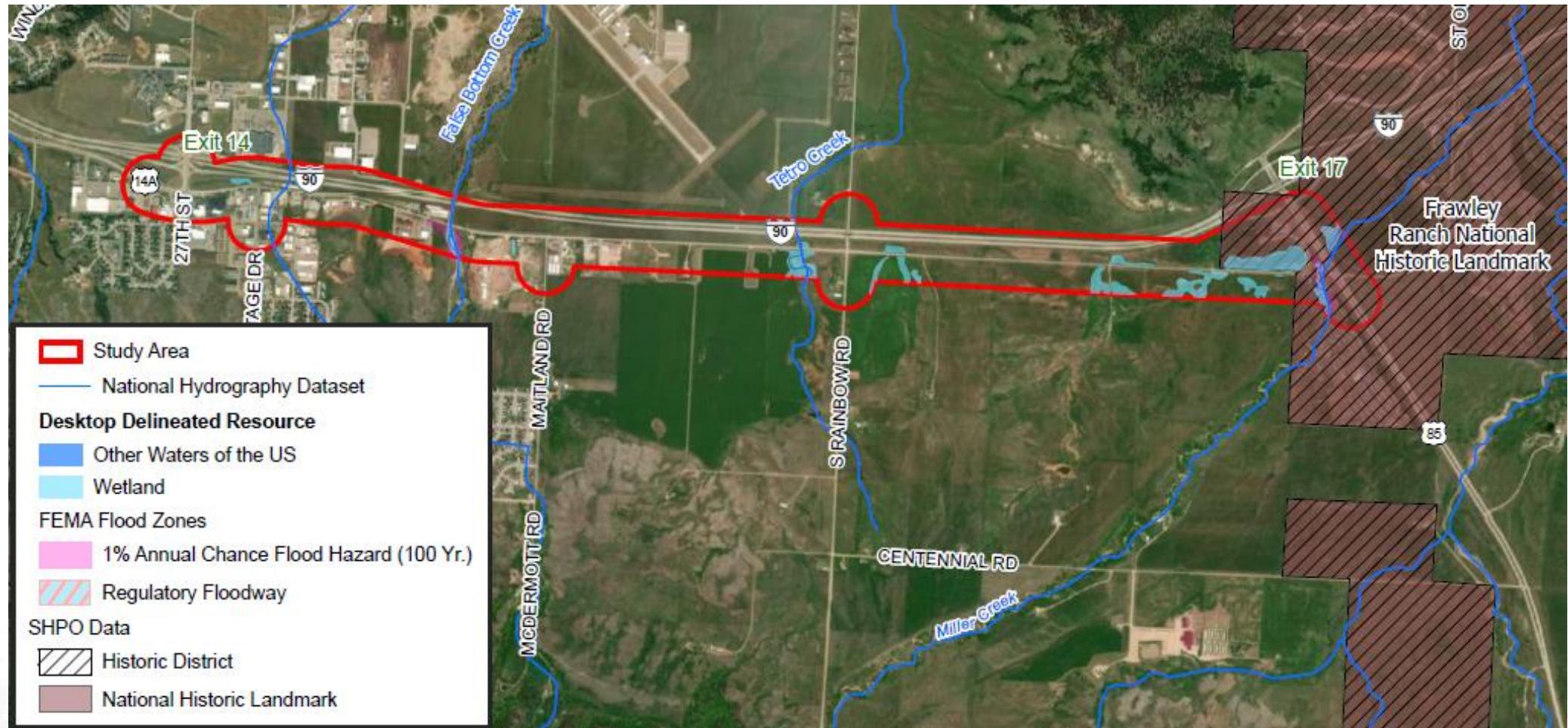


Crash Density



- Do you have any safety concerns along the study corridor?
- Did you witness a 'close call' that could have resulted in a collision?

Environmental Resources within Study Area



What are your environmental concerns for the study area?

Please provide your thoughts and feedback on..

- Transportation issues and needs to be addressed by this study
- Goals and priorities to help develop long-range vision for the corridor

Opportunities to provide feedback:

- Comment card
- Study contacts
- Website: www.ColoradoBlvdCorridorStudy.com

Next Steps

- Comments by March 2nd
- Develop, refine, and evaluate concepts that reflect a future 'vision' for the corridor
- Present concepts and preliminary recommendations at Public Meeting #2 (late summer 2023)

Contact Information:

Tammy Williams, P.E.

SDDOT Project Manager

605-295-7212

tammy.williams@state.sd.us

Stacia Slowey, P.E.

Consultant Project Manager

605-791-6109

stacia.slowey@hdrinc.com