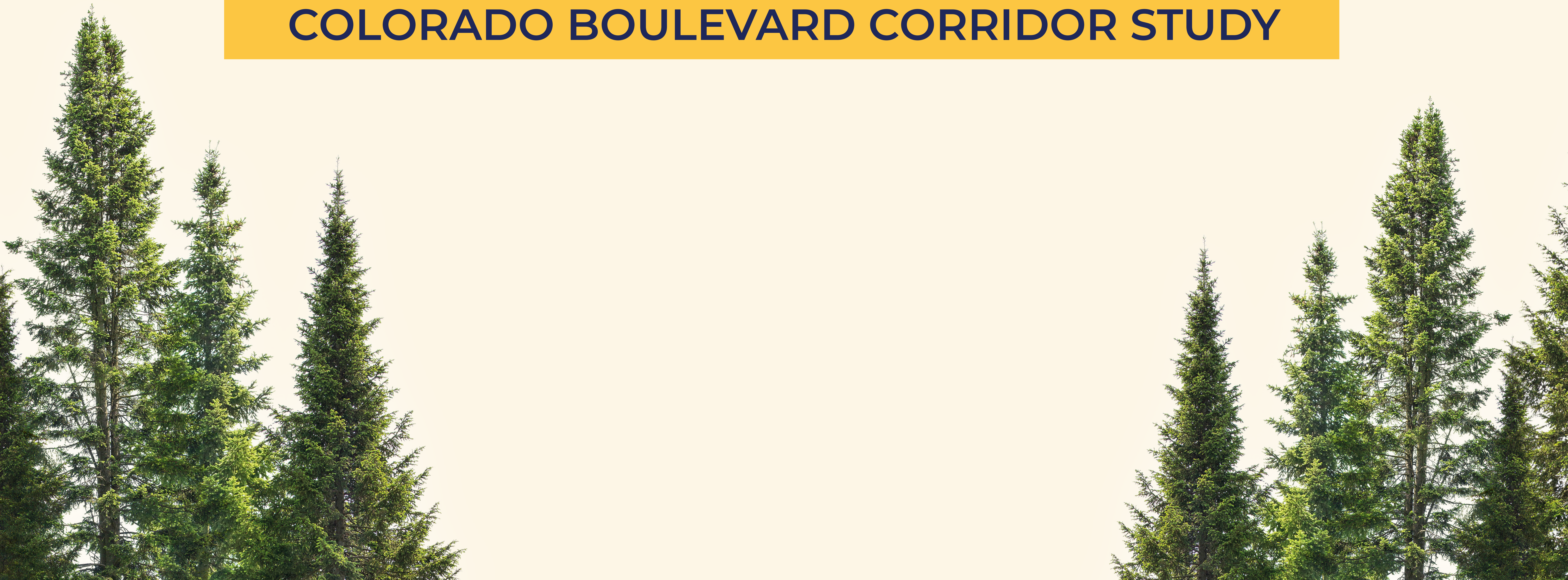


WELCOME

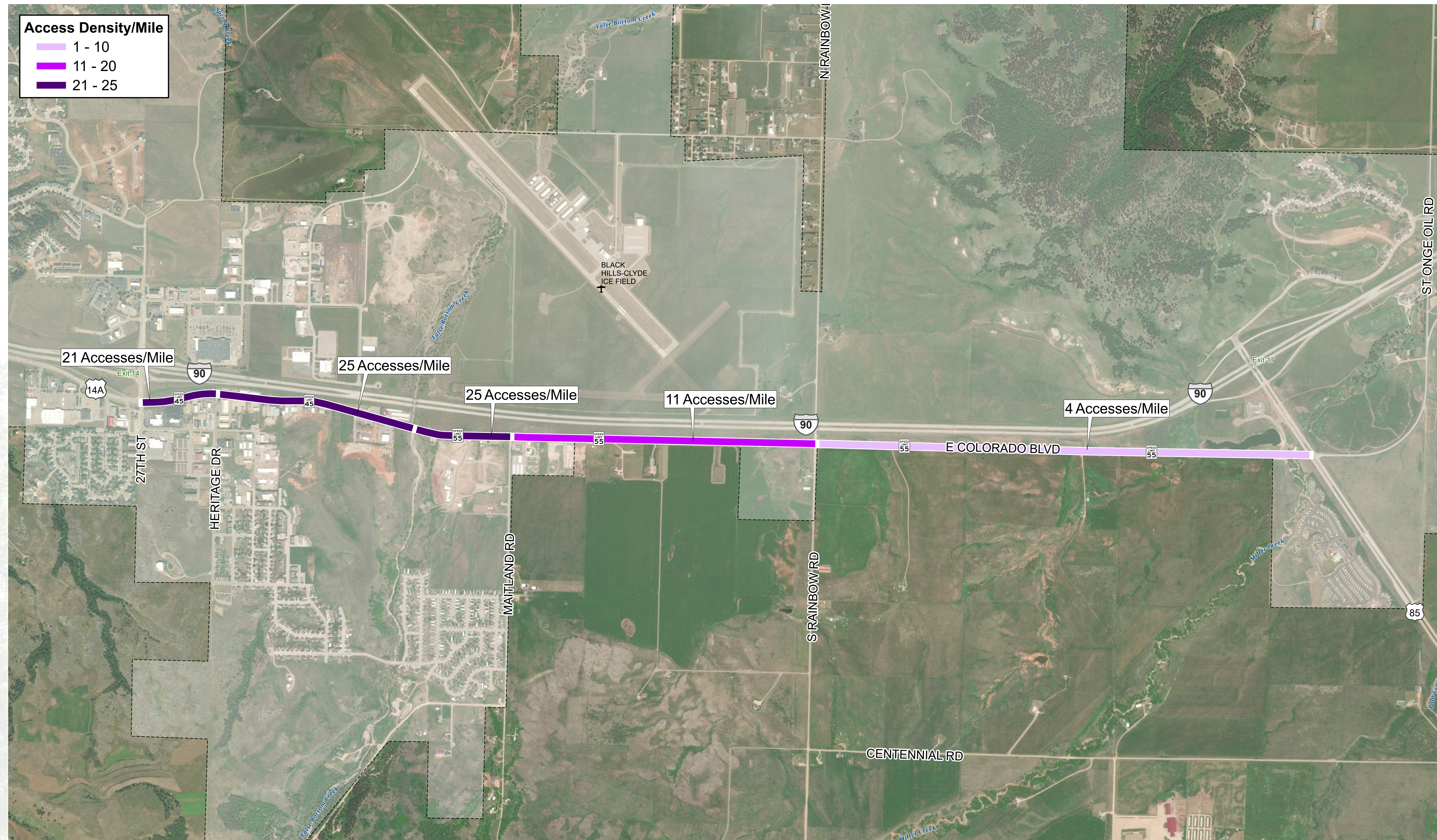
COLORADO BOULEVARD CORRIDOR STUDY



ACCESS DENSITY

COLORADO BOULEVARD CORRIDOR STUDY

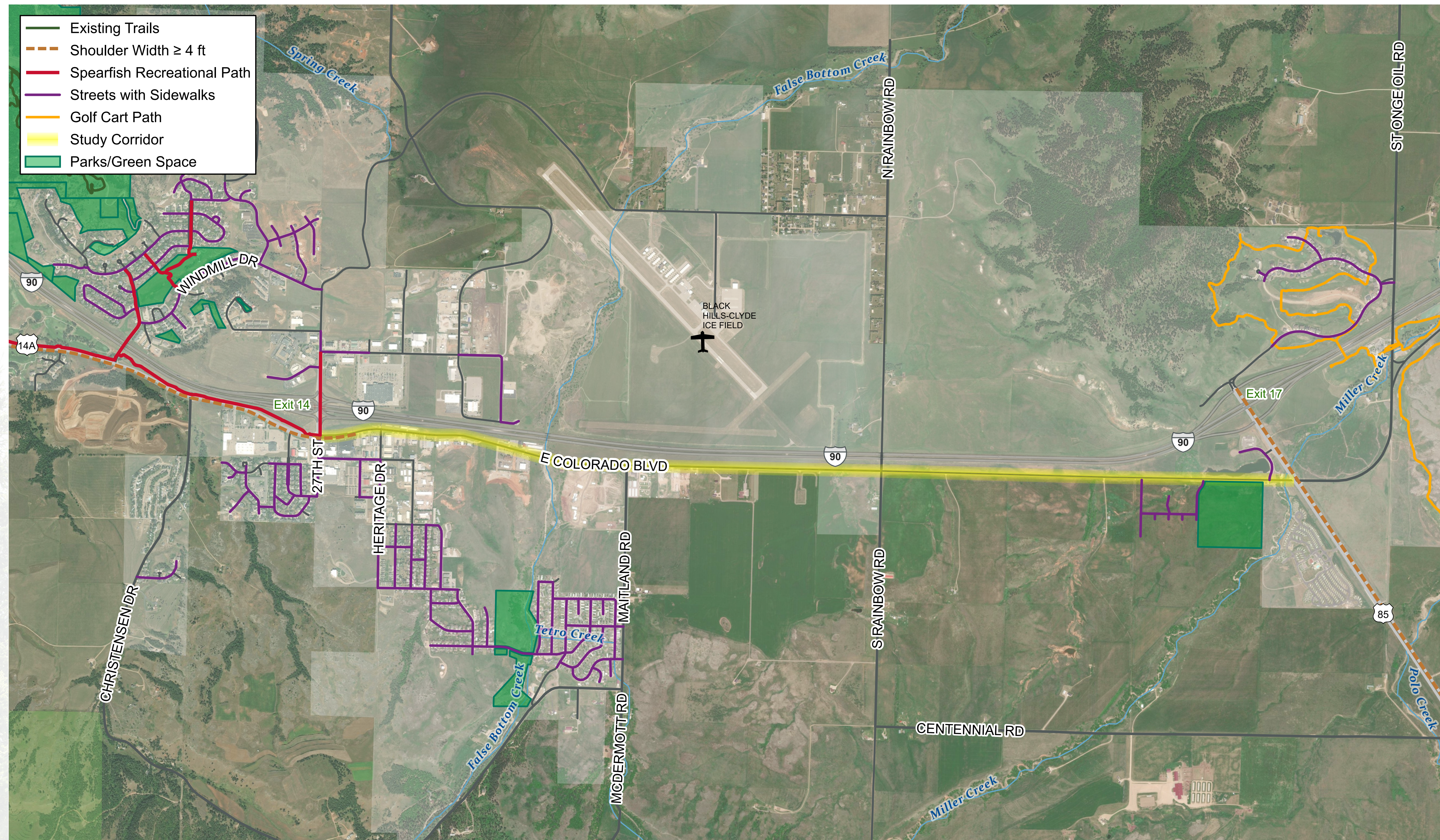
Access is a necessary part of the roadway network, but it also introduces conflict and friction into the traffic stream. Research findings demonstrate access density increases crash potential and lowers corridor travel speeds.



BICYCLE AND PEDESTRIAN FACILITIES

COLORADO BOULEVARD CORRIDOR STUDY

- Do you currently walk or bicycle along the study corridor? Would you use this corridor as a pedestrian or bicyclist if there was a recreation path, sidewalk and/or 4-foot roadway shoulder? What destinations would you be most likely to walk or bike to/from?
- If a recreation path were constructed, would you prefer it to be located on the north or south side of the study corridor?
- Are there any existing multi-modal facilities missing from this map?

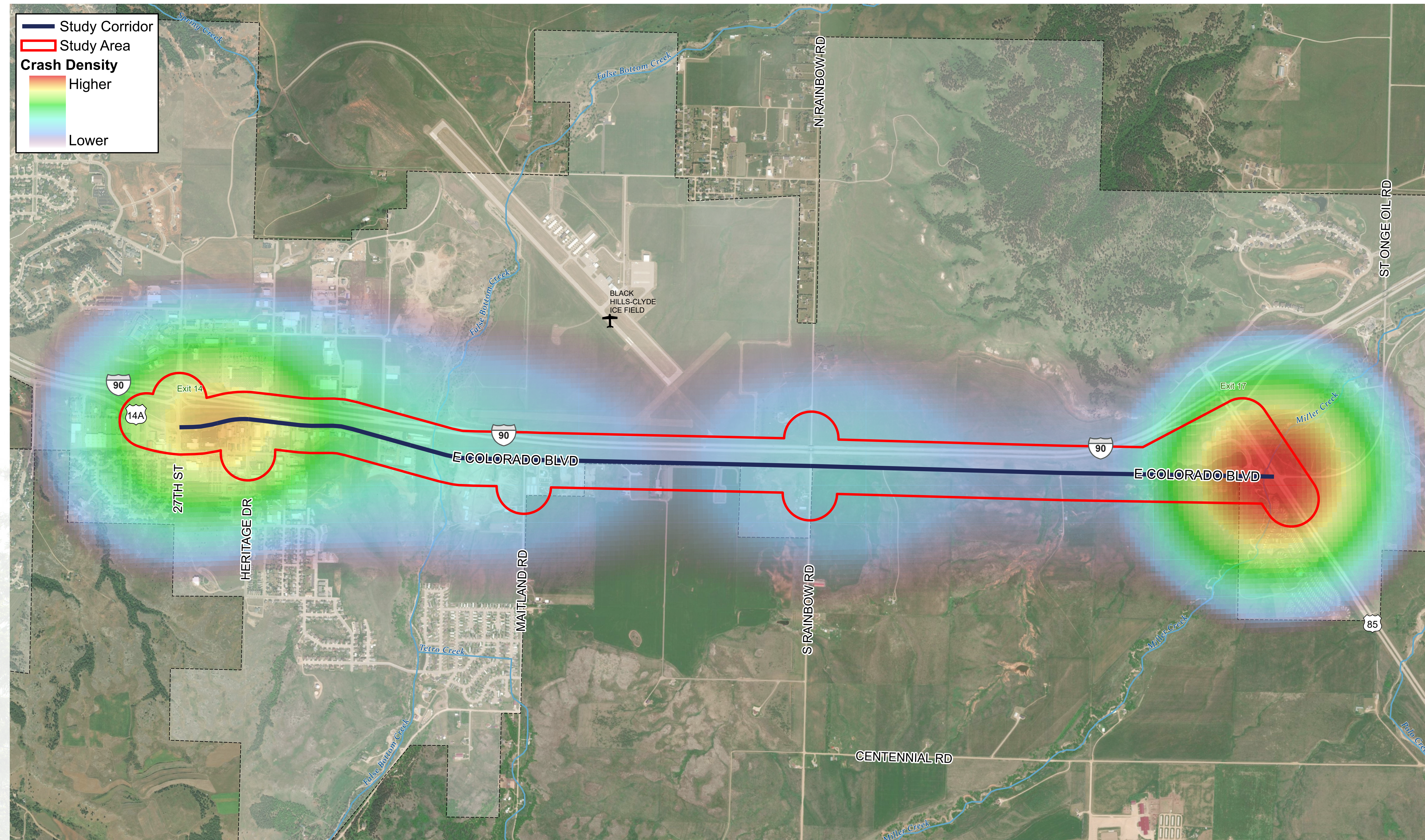


CRASH HISTORY AND DENSITY

COLORADO BOULEVARD CORRIDOR STUDY

Do you have any safety concerns along the study corridor?

Did you witness a “close call” that may have resulted in a collision?



TRAFFIC VOLUMES

COLORADO BOULEVARD CORRIDOR STUDY



Traffic volumes are expected to increase significantly in the future along Colorado Boulevard.

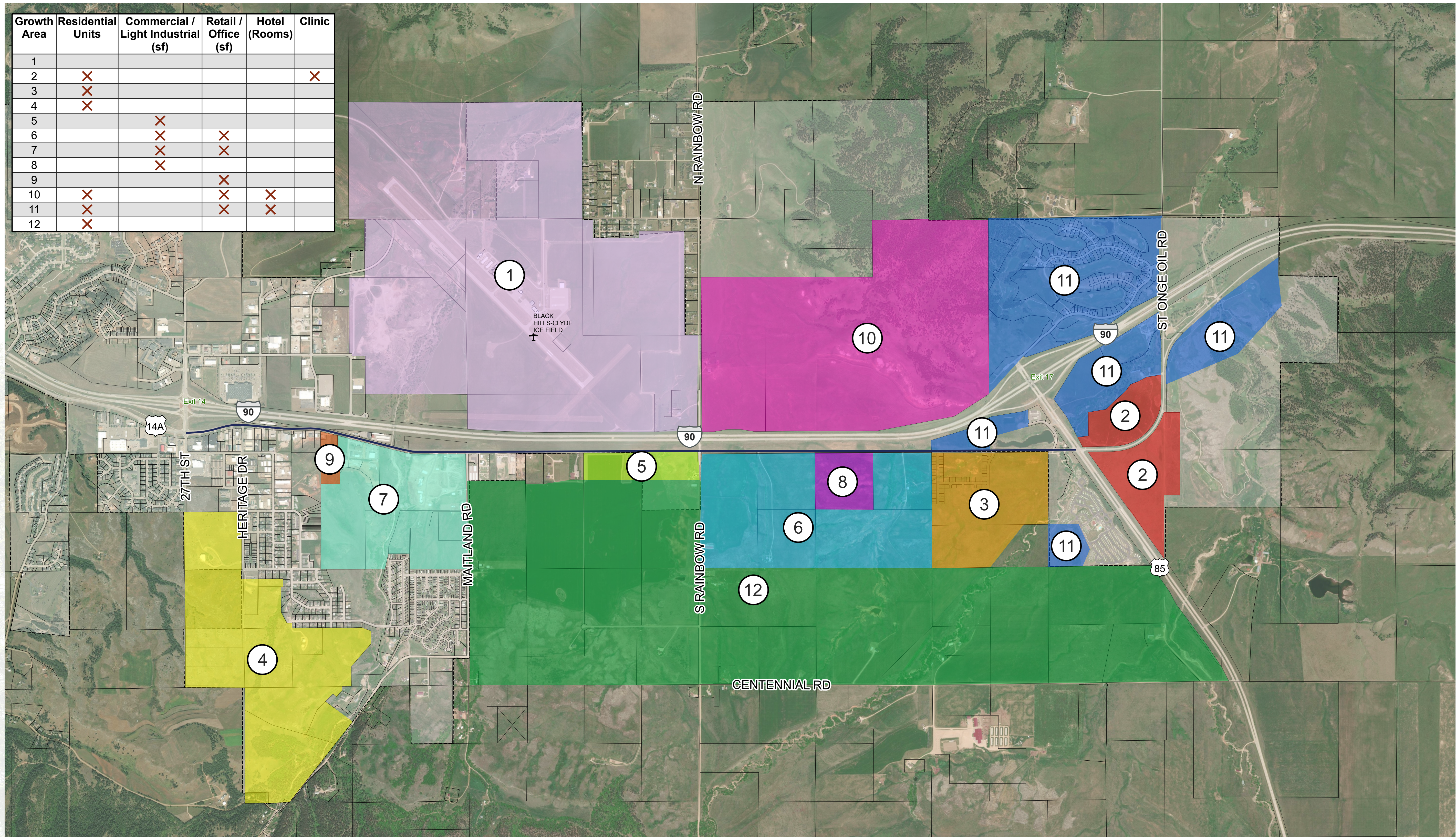
Traffic capacity improvement projects will be necessary as development increases along the corridor:



GROWTH AREAS

COLORADO BOULEVARD CORRIDOR STUDY

The growth areas shown on this map were developed in conjunction with the City of Spearfish and Lawrence County. Future land use types, sizes, and locations were used in the development of future traffic forecasts.



LOCAL ROADWAY NETWORK



COLORADO BOULEVARD CORRIDOR STUDY

The existing roadway network can be classified by three main classifications: arterial, collector, and local. Arterial roadways prioritize mobility, while local roadways prioritize local access. Collectors provide the balance between mobility and local access.

Are there any roadway connections you wish existed surrounding the corridor?

What is your long-term vision for the corridor?



ENVIRONMENTAL RESOURCES

COLORADO BOULEVARD CORRIDOR STUDY

We are completing an environmental overview within the study area as well as soliciting comments from resource agencies on any environmental concerns for the area. Our desktop review indicated wetlands, stream, floodplain, historic structures and a historic landmark.

What are your environmental concerns for the area?

